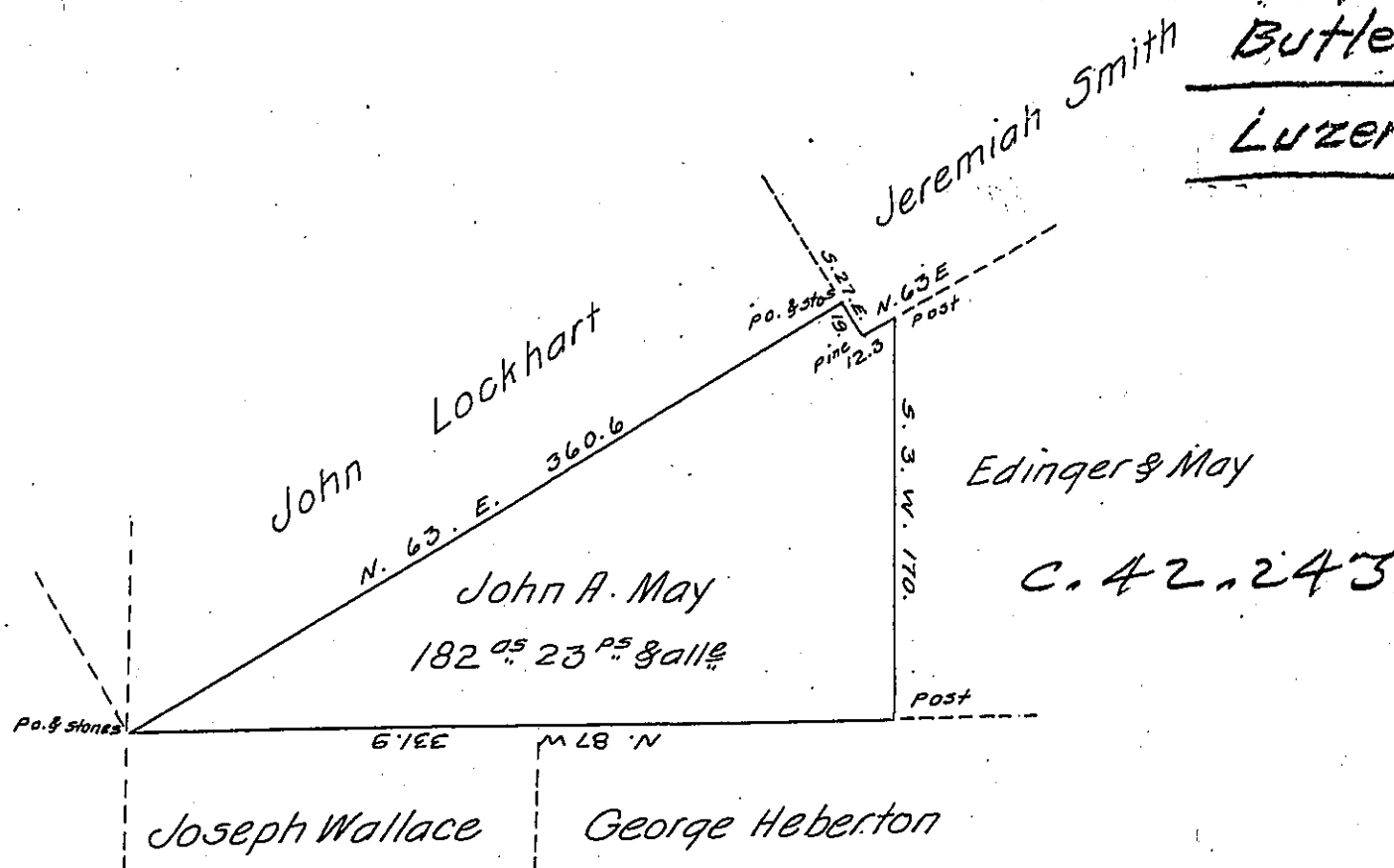


Foster
&
Butler

Luzerne



Draft of a tract of land (unimproved) situate in the Township of Foster and County of Luzerne. Containing One hundred and eighty two Acres. and twenty three perches and allowance of six per cent &c.

Surveyed the above described tract the 18th day of September 1866 to John A. May in pursuance of his warrant dated the 11th day of May 1866.

To Hon. J. M. Campbell
S. G.

John Sturdevant
Surveyor for Luzerne Co.

IN TESTIMONY that the above is a copy of the original remaining on file in the Department of Internal Affairs of Pennsylvania, made conformably to an Act of Assembly approved the 16th day of February 1833, I have hereunto set my hand and caused the Seal of said Department to be affixed at Harrisburg, this nineteenth day of December 1907.

Mary Horrell
Secretary of Internal Affairs.